

**ADA Compliant**

*This Space for Architect/Engineer Approval*

Job Name \_\_\_\_\_ Date \_\_\_\_\_  
 Model Specified \_\_\_\_\_ Quantity \_\_\_\_\_  
 Customer/Wholesaler \_\_\_\_\_  
 Contractor \_\_\_\_\_  
 Architect/Engineer \_\_\_\_\_



5SP-18  
 18" equip Swing Nozzle  
 w/ Laminar Flow Device.  
 Rigid Conversion Requires  
 014200-45 Lock Washer  
 (Sold Separately)

Ceramic Cartridges &  
 equip Lever Handles  
 w/ Color Coded Screws

1 1/4"  
 [32mm]  
 Maximum  
 Thickness

Mounting Surface

10 1/2"  
 [267mm]

8 1/16"  
 [205mm]

18 1/8"  
 [460mm]

Ø 2 1/4"  
 [57mm]

18" Long Flexible  
 Stainless Steel  
 Supply Hoses

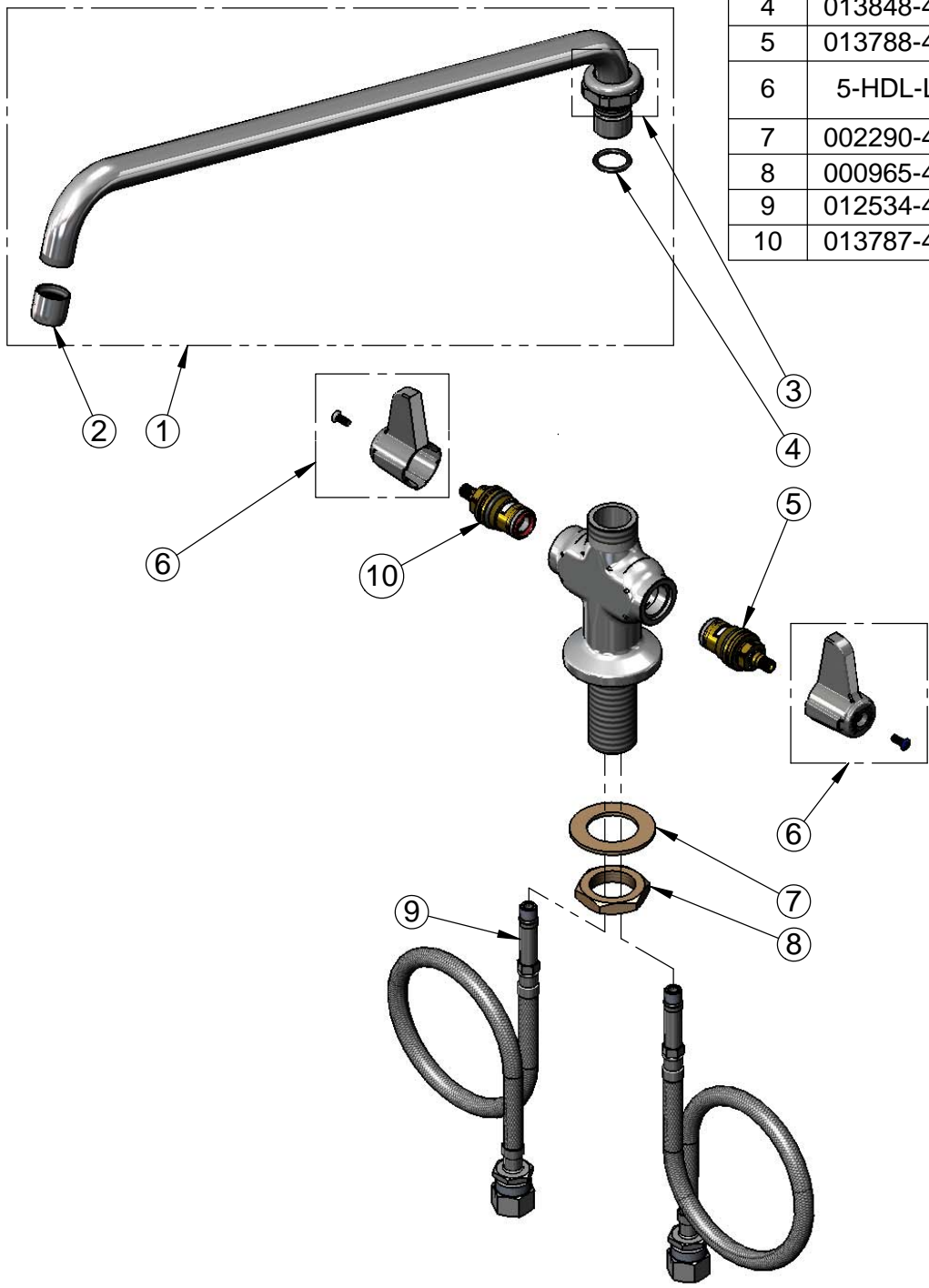
Ø 1 1/8"  
 [29mm]  
 Shank

Compression Fittings for  
 5/8" O.D. Copper Tubing  
 (Remove Compression Nut  
 for 1/2" NPSM Male)

Rough-In Requirement:  
 Ø 1 1/2" [38mm] Mounting Hole

Model Number <p style="text-align: center;"><b>5F-2SLX18</b></p>	Product Specifications: <p style="text-align: center;">Single Hole Deck Mount Mixing Faucet w/ Ceramic Cartridges,          equip Lever Handles, 18" equip Swing Nozzle          &amp; 18" Flexible Inlets</p>
Product Compliance: ASME A112.18.1 / CSA B125.1 NSF 61 - Section 9 NSF 372 (Low Lead Content) ANSI A117.1 (ADA)	<div style="display: flex; justify-content: space-between; align-items: center;"> <div data-bbox="600 1906 738 1980"> <p>equip            Foodservice            Accessories</p> </div> <div data-bbox="743 1858 1096 2026" style="text-align: center;"> </div> <div data-bbox="1101 1894 1567 1995"> <p>2 Saddleback Cove, P.O. Box 1088            Travelers Rest, South Carolina 29690            Phone: 800.891.4808 Fax: 800.868.0084            equip.tsbrass.com</p> </div> </div>

ITEM NO.	SALES NO.	DESCRIPTION
1	5SP-18	18" equip Swing Nozzle
2	014250-45	Laminar Flow Device
3	013839-25	equip Swivel Nut
4	013848-45	equip Swivel Piece O-Ring
5	013788-45	equip Ceramic Cartridge, LTC
6	5-HDL-L	equip Lever Handle w/ Color Coded Screws
7	002290-45	Lock Washer
8	000965-45	Lock Nut
9	012534-45	18" Flexible Supply Hose (2)
10	013787-45	equip Ceramic Cartridge, RTC



Model Number  
**5F-2SLX18**

Product Specifications:  
Single Hole Deck Mount Mixing Faucet w/ Ceramic Cartridges,  
equip Lever Handles, 18" equip Swing Nozzle  
& 18" Flexible Inlets

Product Compliance:  
ASME A112.18.1 / CSA B125.1  
NSF 61 - Section 9  
NSF 372 (Low Lead Content)  
ANSI A117.1 (ADA)

equip  
Foodservice  
Accessories



2 Saddleback Cove, P.O. Box 1088  
Travelers Rest, South Carolina 29690  
Phone: 800.891.4808 Fax: 800.868.0084  
equip.tsbrass.com