



ADA Compliant

This Space for Architect/Engineer Approval

Job Name _____ Date _____

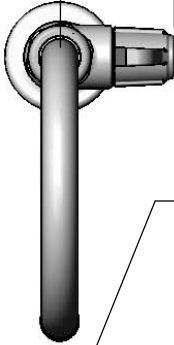
Model Specified _____ Quantity _____

Customer/Wholesaler _____

Contractor _____

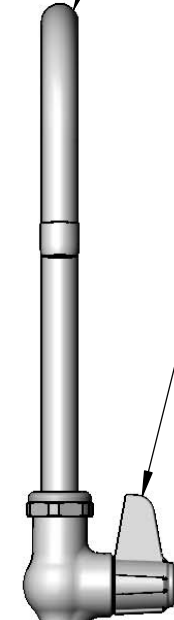
Architect/Engineer _____

2 3/8"
[60mm]



5SP-05
5 1/2" equip Swivel Gooseneck
w/ Laminar Flow Device.
Rigid Conversion Requires
014200-45 Lock Washer
(Included)

Ceramic Cartridge &
equip Lever Handle



1 5/8"
[41mm]
Maximum
Thickness

Mounting Surface

2 7/16"
[62mm]

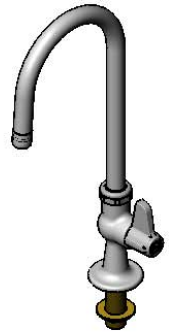
1/2" NPSM
Male Inlet

14 13/16"
[376mm]

9 9/16"
[242mm]

5 9/16"
[141mm]

Ø2 5/16"
[58mm]



Rough-In Requirement:
Ø1" [25mm] Mounting Hole

Model Number

5F-1SLX05

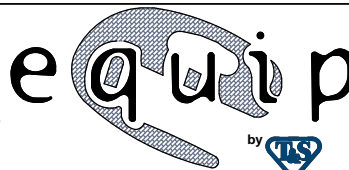
Product Specifications:

Single Supply Deck Mount Faucet w/ Ceramic Cartridge,
equip Lever Handle, 5 1/2" equip Swivel Gooseneck
& 1/2" NPSM Male Inlet

Product Compliance:

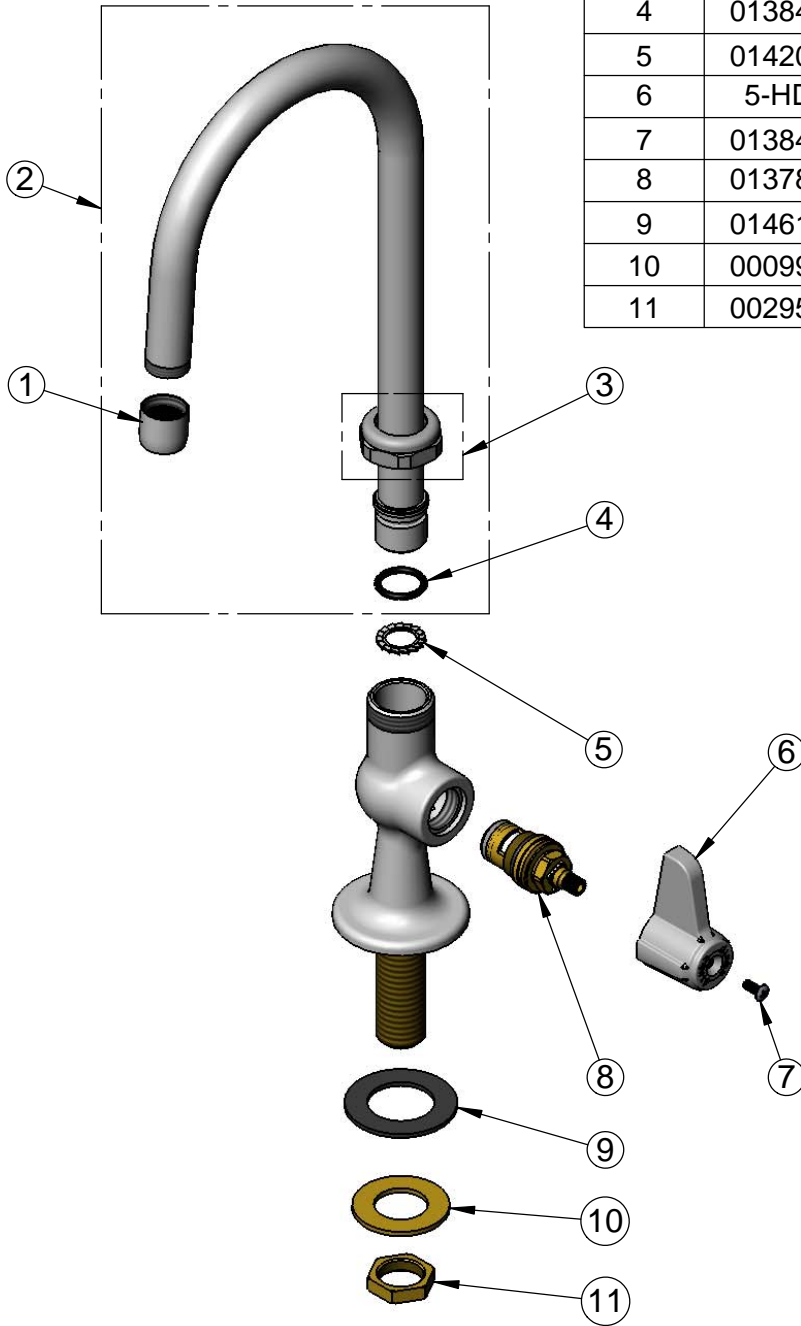
ASME A112.18.1 / CSA B125.1
NSF 61 - Section 9
NSF 372 (Low Lead Content)
ANSI A117.1 (ADA)

equip
Foodservice
Accessories



2 Saddleback Cove, P.O. Box 1088
Travelers Rest, South Carolina 29690
Phone: 800.891.4808 Fax: 800.868.0084
equip.tsbrass.com

ITEM NO.	SALES NO.	DESCRIPTION
1	014250-45	Laminar Full Flow Outlet Device
2	5SP-05	5 1/2" equip Swivel Gooseneck
3	013839-25	Swivel Nut
4	013848-45	O-Ring, Size -115
5	014200-45	Star Washer, Anti-Rotation
6	5-HDL-L	equip Lever Handle
7	013849-45	Plain Handle Screw (10)
8	013787-45	equip Ceramic Cartridge, RTC
9	014612-45	Deck Seal
10	000999-45	Brass Lock Washer
11	002954-45	Shank Lock Nut



Model Number
5F-1SLX05

Product Specifications:
Single Supply Deck Mount Faucet w/ Ceramic Cartridge,
equip Lever Handle, 5 1/2" equip Swivel Gooseneck
& 1/2" NPSM Male Inlet

Product Compliance:
ASME A112.18.1 / CSA B125.1
NSF 61 - Section 9
NSF 372 (Low Lead Content)
ANSI A117.1 (ADA)

equip
Foodservice
Accessories



2 Saddleback Cove, P.O. Box 1088
Travelers Rest, South Carolina 29690
Phone: 800.891.4808 Fax: 800.868.0084
equip.tsbrass.com